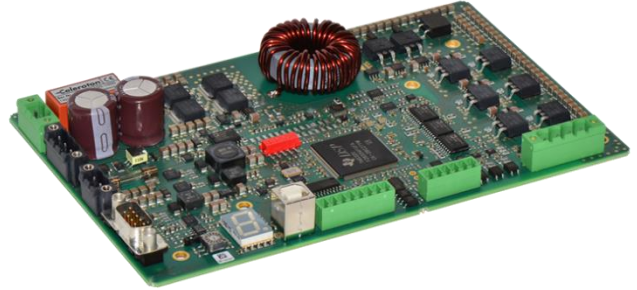


CC-100-1000

Converter for driving permanent-magnet synchronous motors (PMSM) and brushless DC motors (BLDC).

- Sensorless speed control from 5,000 rpm up to 500,000 rpm
- Maximum output power of 1,000 W
- No output filter required
- Separate supply for power and digital part
- User definable setup for different motor parameters
- Torque or speed control
- Integrated braking chopper up to 2 W
- Optional external braking chopper up to 420 W
- Highest possible efficiency
- Parallel connection of several converters to one DC-Bus possible
- User-friendly PC control software (CelerotonPilot)



Specifications converter

Input voltage power part U_{in} (DC)	24 – 100 V
Input voltage digital part U_{in} (DC)	24 V
Maximum output power (with respective cooling)	1,000 W
Output voltage (peak value phase-phase)	0 – 0.93 U_{in}
Maximum phase current (PAM-operation)	8.7 Arms/12.3 A _{peak} ¹
Maximum frequency/speed (PAM-operation)	8.3 kHz/500,000 rpm
Operating range	4-Quadrant
Communication interface	USB
Communication interfaces (optional)	RS232, CAN
PC control software	CelerotonPilot
Weight	0.28 kg
Dimensions (L x W x H) without heat sink	195 x 125 x 24 mm
Dimensions (L x W x H) with heat sink	195 x 125 x 62.62 mm
Operating temperature	0 – 40 °C

User interface (X7, X8)

Connector X7 – I/O Interface (8 pins)

2 x Digital inputs	0 – 4 V	Low Level
	10 – 24 V	High Level
3 x Digital outputs	0 – 24 V (Relay, normally open contacts)	
1 x COM	Common rail for digital outputs	
2 x GND		

¹ Fundamental of the PAM block current

All rights reserved. All information in this document is based on Celeroton's best knowledge and is not to be considered as a warranty or quality specification. The information given is designed as a guidance and customers are requested to check the suitability and usability of the product in their specific application with consulting Celeroton. The information herein is subject to change without notification.

Connector X8 – I/O Interface (6 pins)

1 x Analog input	0 – 10 V
1 x Analog output	0 – 10 V
1 x Temperature measurement input	PTC or NTC, resistance range according to option Tx
1 x Auxiliary power supply	10 V, 200 mA
2 x GND	

Operating range

The operating range of the converter is dependent on the output voltage (U_{out}) (peak value phase-phase) in Figure 1. The output power (P_{out}) increases with the output voltage as the phase current (i_{ph}) (rms) is constant until the power limit is reached. Above that point i_{ph} decreases with increasing output voltage. The input voltage (U_{in}) (grey area) must be higher than the maximum required output voltage.

Operating with full output power of 1,000 W requires cooling with heat sink with thermal resistance $R_{th} \leq 1$ K/W. Without heat sink a maximum phase current of 2.3 A and maximum output power of 280 W is available.

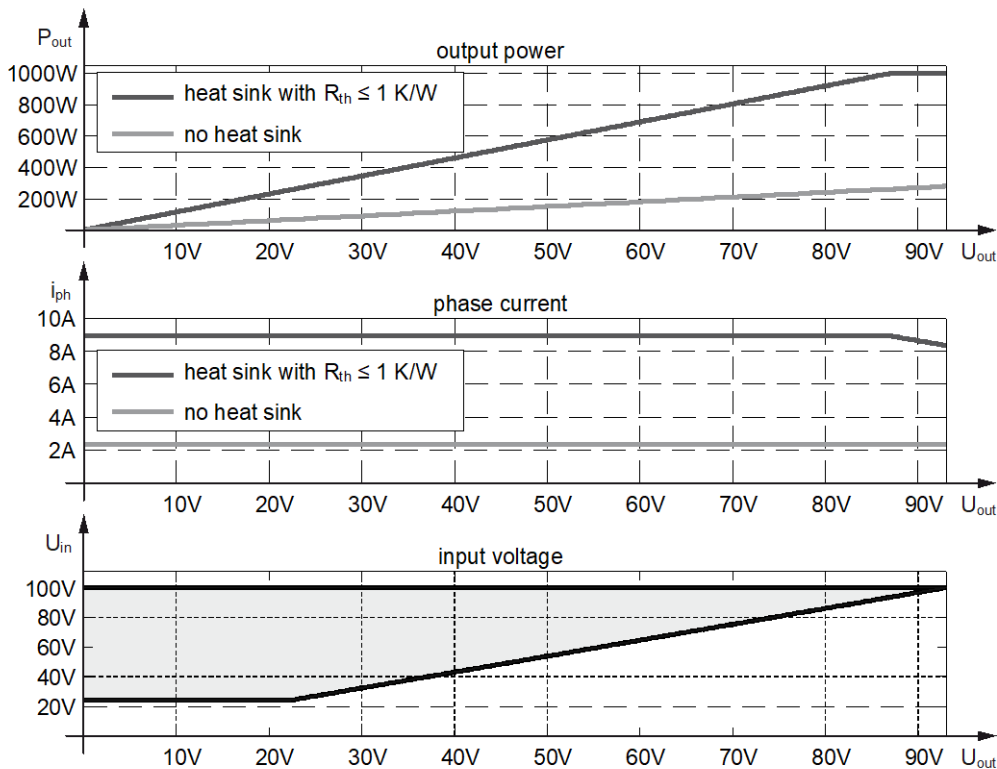


Figure 1: Output power, phase current and input voltage range of the converter CC-100-1000.

All rights reserved. All information in this document is based on Celeroton's best knowledge and is not to be considered as a warranty or quality specification. The information given is designed as a guidance and customers are requested to check the suitability and usability of the product in their specific application with consulting Celeroton. The information herein is subject to change without notification.

Order codes: CC-100-1000.SLx.Tx.HS

Sensorless SLx

SL1 (Standard)	Speed constants between 550 and 18,250 rpm/V Sensorless speed control from 7,000 rpm
SL2	Speed constants between 400 and 7,900 rpm/V Sensorless speed control from 5,000 rpm

The stated values are valid for number of pole pairs $p=1$. For higher number of pole pairs the speed constants and minimum speeds are divided by the number of pole pairs p .

PTC/NTC Tx

T1 (Standard)	Measurement range 6-150 Ω , e.g. PT100
T2	Measurement range 0.26-86 k Ω , e.g. KTY84, NTC10k

Heat sink HS

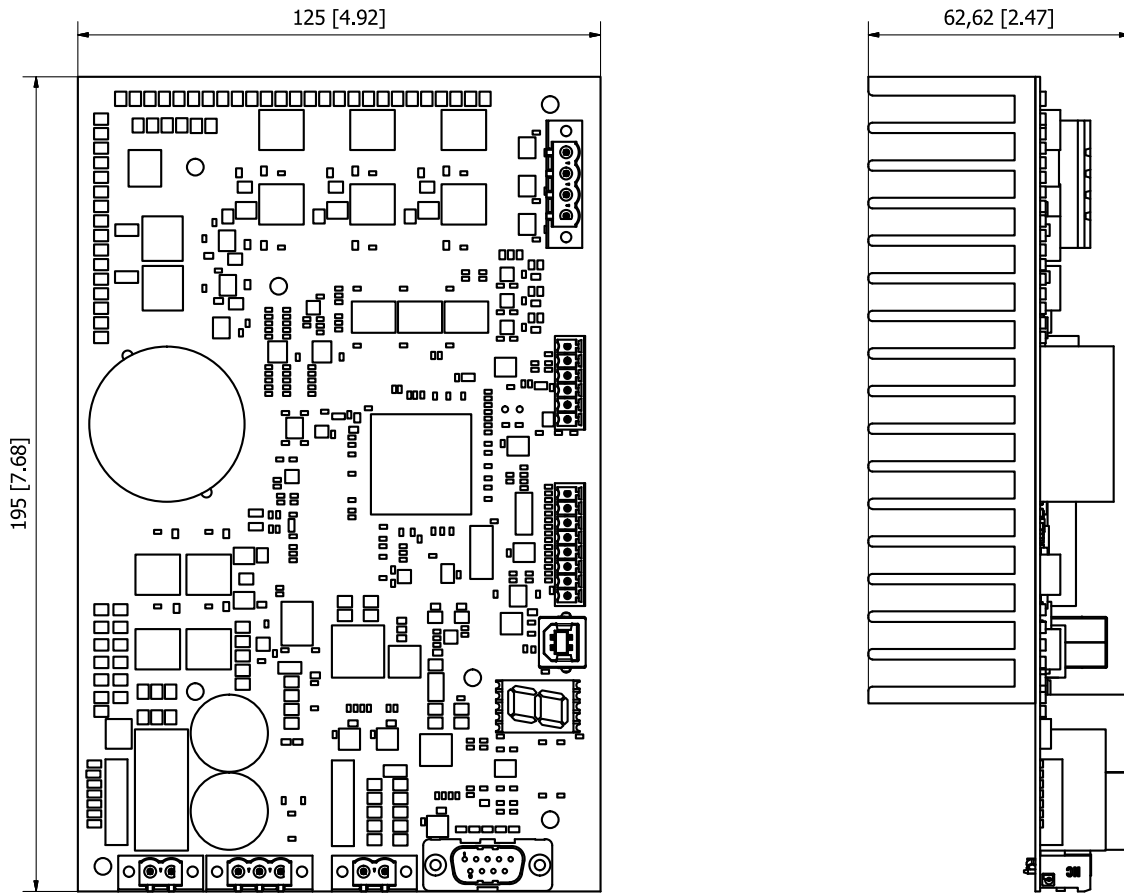
_ (Standard)	Without heat sink
HS	With heat sink

Accessories

Connector set CC-100-1000

Ordering information	Article number
CC-100-1000.SL1.T1	4030063
CC-100-1000.SL1.T2	4030064
CC-100-1000.SL2.T1	4030065
CC-100-1000.SL2.T2	4030066
CC-100-1000.SL1.T1.HS	4030067
CC-100-1000.SL1.T2.HS	4030068
CC-100-1000.SL2.T1.HS	4030069
CC-100-1000.SL2.T2.HS	4030070
Connector set CC-100-1000	4080031

Drawing in mm [inch]



Celeroton AG | Industriestrasse 22 | 8604 Volketswil | Switzerland
T: +41 44 250 52 20 | F: +41 44 250 52 29 | info@celeroton.com

All rights reserved. All information in this document is based on Celeroton's best knowledge and is not to be considered as a warranty or quality specification. The information given is designed as a guidance and customers are requested to check the suitability and usability of the product in their specific application with consulting Celeroton. The information herein is subject to change without notification.